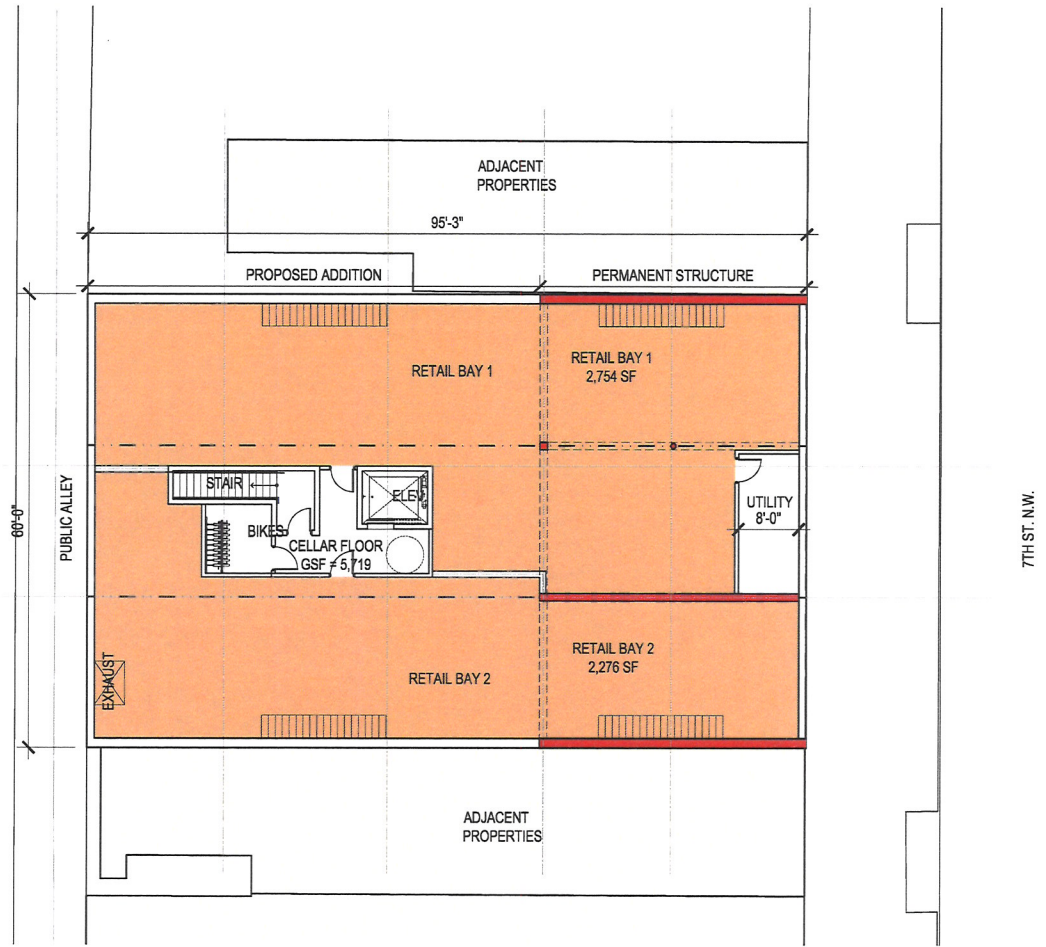


# TAB D

w:\15-003-1012-BE14-7th St. N.W.\Arch\Drawings\15-003-01B\_proposed basement plan.dwg



1 PROPOSED BASEMENT FLOOR PLAN  
SCALE: 1/16" = 1'



1612-1616 7TH ST. N.W.

PROPOSED BASEMENT FLOOR PLAN | A-19

1612-1614 7th St. N.W.  
Washington D.C.  
Square: 420 Lot No: 38 Zone: C-2-A

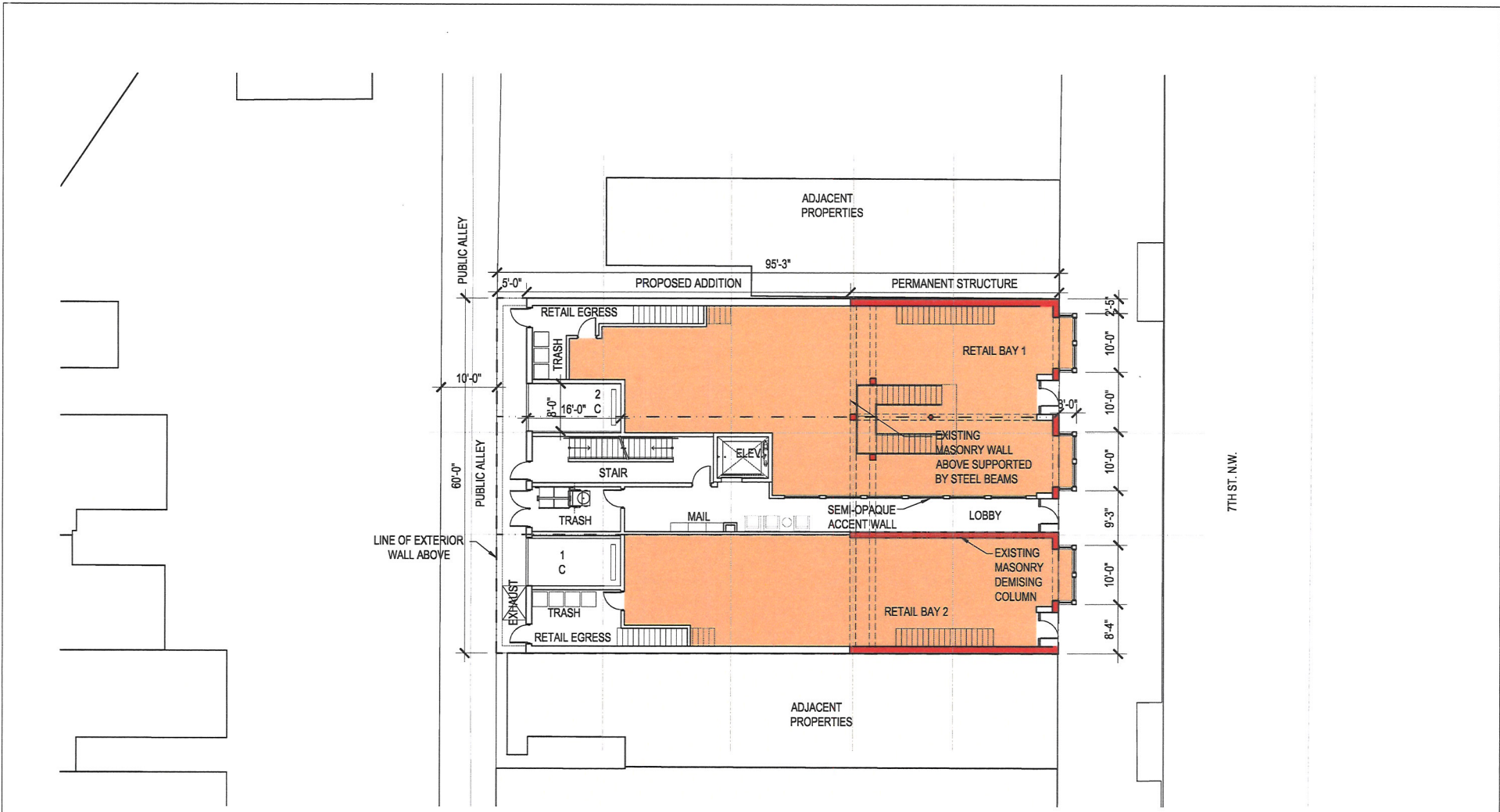


PGN Architects, PLLC  
210 7th Street SE - Suite 201  
Washington, DC 20003  
(P) 202-822-5995 (F) 202-822-0908

08/17/2016

COPYRIGHT © 2015 PGN ARCHITECTS, PLLC

W:\15-0031\_1612-1614 7th St. NW\p\p\p\15-0031\_001\_001\_proposed first floor plan.dwg



1 PROPOSED FIRST FLOOR PLAN  
SCALE: 1/16" = 1'

1612-1614 7TH ST. N.W.

1612-1614 7th St. N.W.  
Washington D.C.  
Square: 420 Lot No: 38 Zone: C-2-A



PGN Architects, PLLC  
2117 7th Street SE - Suite 201  
Washington, DC 20003  
(P) 202-822-5995 (F) 202-822-0908

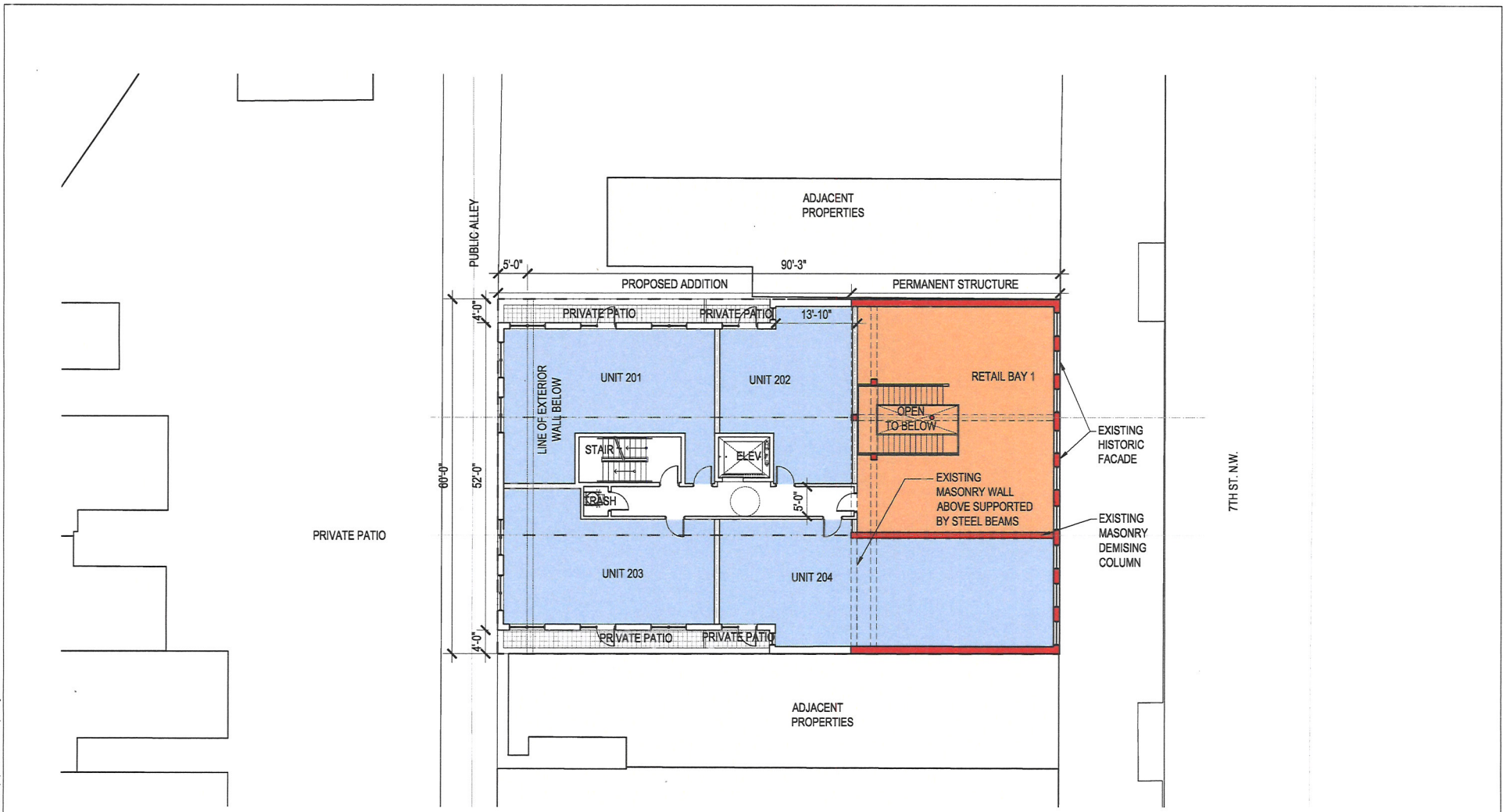
PROPOSED FIRST FLOOR PLAN | A-20



08/17/2016

COPYRIGHT © 2016 PGN ARCHITECTS, PLLC

W:\D:\003\_1612\_1614 7th St. NW\mrg\plans\15-0031\_001\_001\_proposed second floor plan.dwg

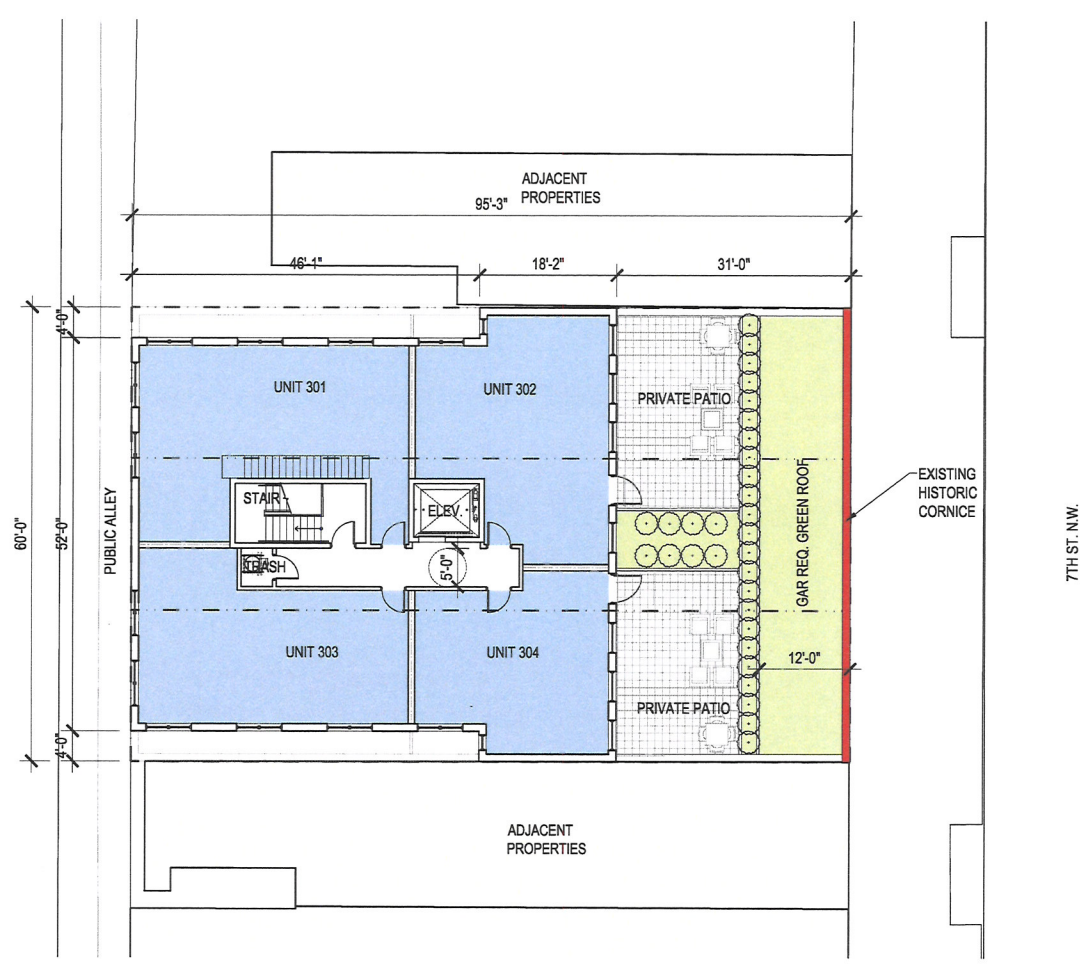


1 PROPOSED SECOND FLOOR PLAN  
SCALE: 1/16" = 1'

1612-1616 7TH ST. N.W.

1612-1614 7th St. N.W.  
Washington D.C.  
Square: 420 Lot No: 38 Zone: C-2-A


**P&N** Architects, PLLC  
 210 7th Street SE - Suite 201  
 Washington, DC 20003  
 (P) 202-822-8996 (F) 202-822-0908



1 PROPOSED THIRD FLOOR PLAN  
SCALE: 1/16" = 1'



PROPOSED THIRD FLOOR PLAN A-22

08/17/2016

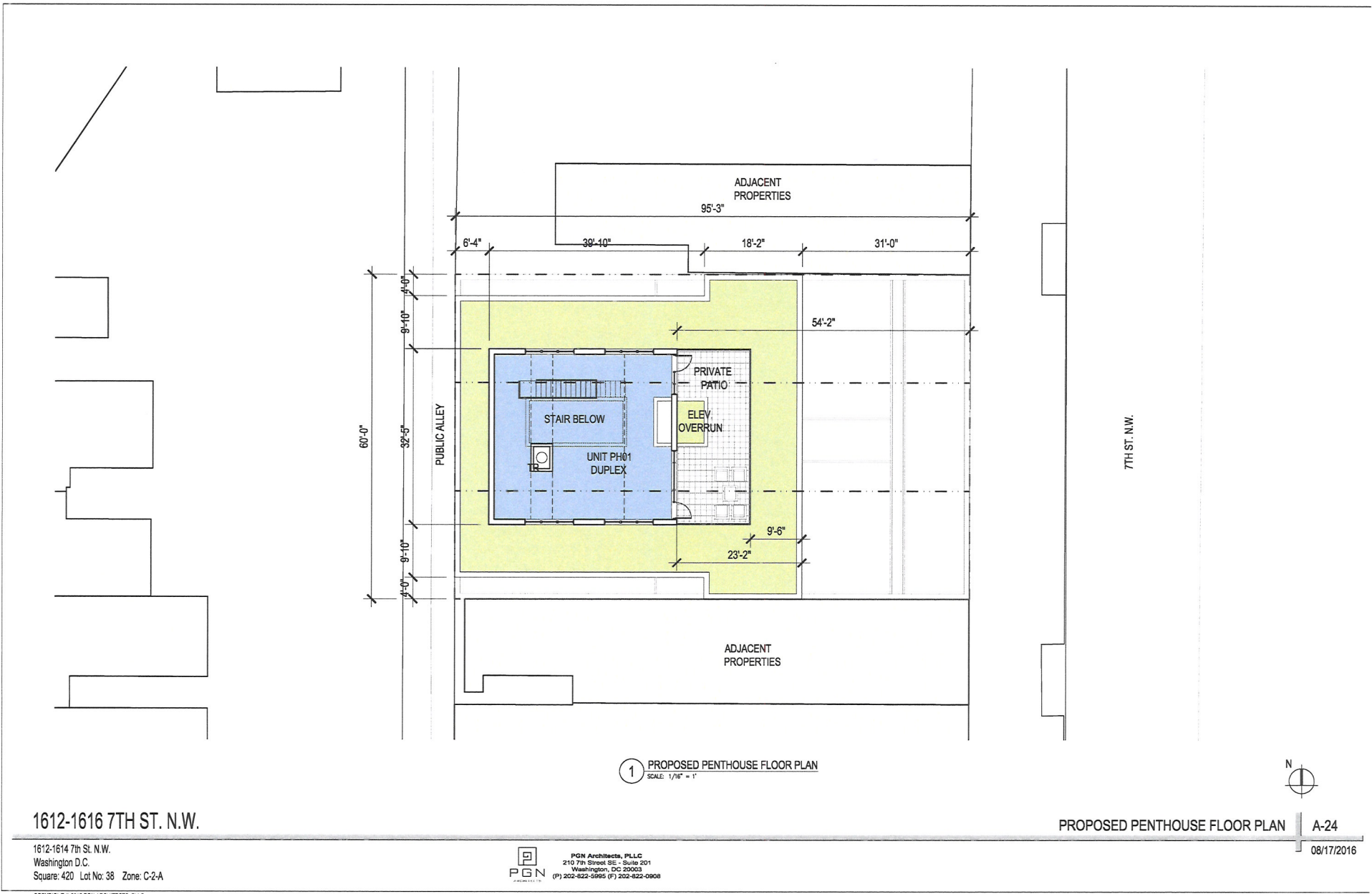
1612-1616 7TH ST. N.W.

1612-1614 7th St. N.W.  
Washington D.C.  
Square: 420 Lot No: 38 Zone: C-2-A

**P&G**  
ARCHITECTS, PLLC  
215 7th Street SE - Suite 301  
Washington, DC 20003  
(P) 202-822-8896 (F) 202-822-0908

W:\15-000-1612-1614\_7th st. n.w.\pennypack\15-000-1612-1614-001\_002\_proposed third floor plan.dwg  
 COPYRIGHT © 2016 P&G ARCHITECTS, PLLC

\\fs1\001\102\1016\1614\1614\_11\m\Arch\p\1614\1614\_001\_04\_01-proposed penthouse floor plan.dwg



1 PROPOSED PENTHOUSE FLOOR PLAN  
SCALE: 1/16" = 1"

1612-1616 7TH ST. N.W.

1612-1614 7th St. N.W.  
Washington D.C.  
Square: 420 Lot No: 38 Zone: C-2-A



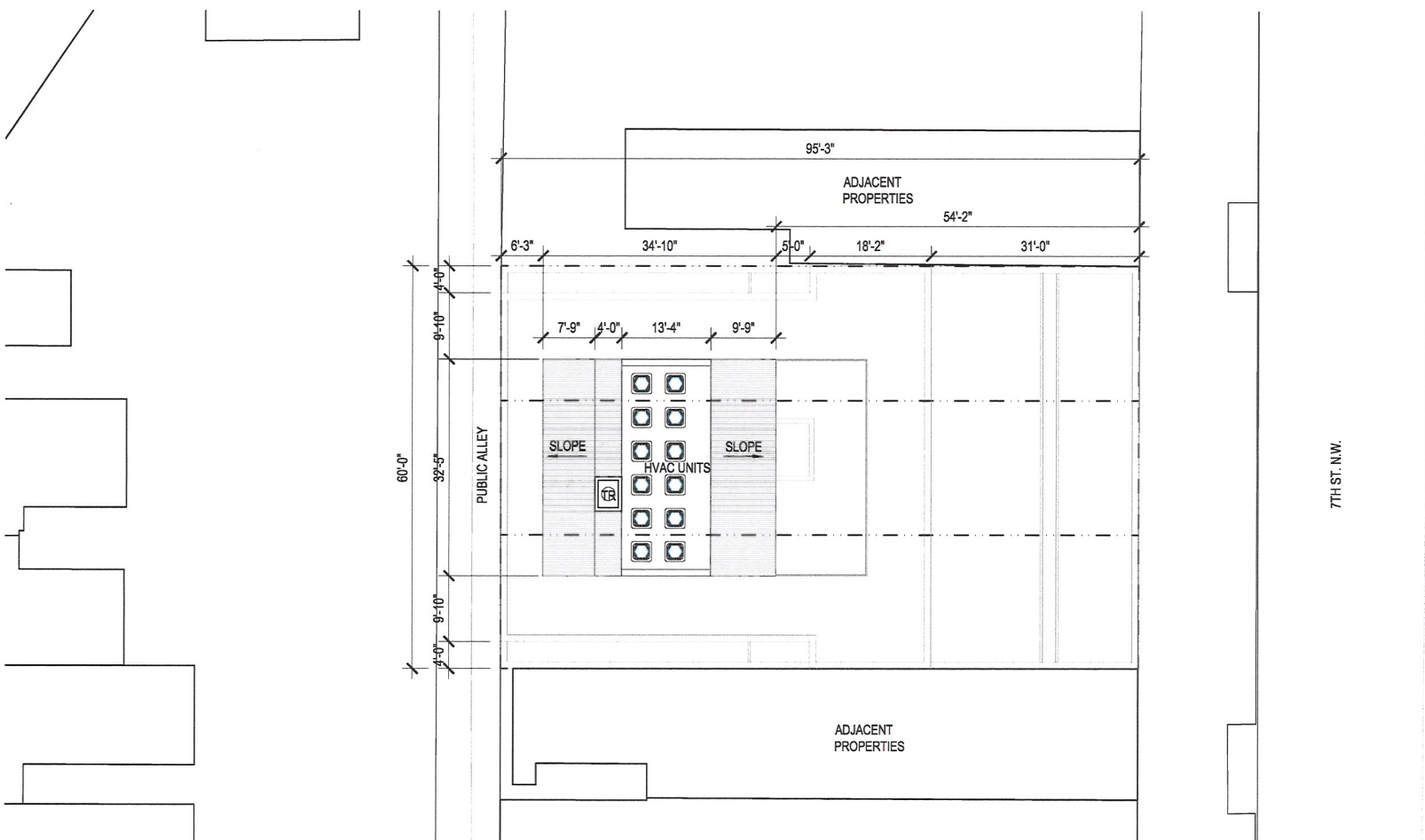
PGN Architects, PLLC  
210 7th Street SE - Suite 201  
Washington, DC 20003  
(P) 202-622-0900 (F) 202-622-0908

PROPOSED PENTHOUSE FLOOR PLAN | A-24



08/17/2016

w:\15-0031\_1612-1614\_7th St NW\Arch\15-0031\_075\_proposed roof floor plan.dwg



1 PROPOSED ROOF FLOOR PLAN  
SCALE: 1/16" = 1'



1612-1614 7TH ST. N.W.

1612-1614 7th St. N.W.  
Washington D.C.  
Square: 420 Lot No: 38 Zone: C-2-A

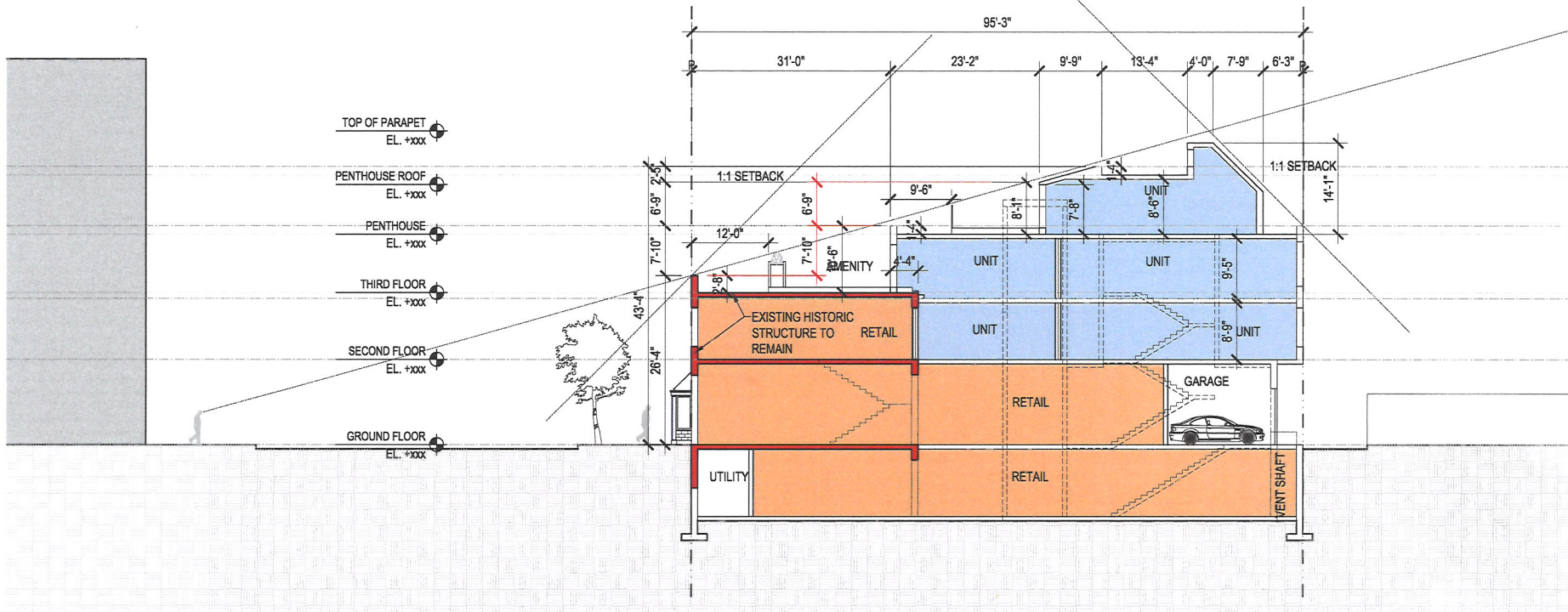


PGN Architects, PLLC  
210 7th Street SE - Suite 201  
Washington, DC 20003  
(P) 202-822-5995 (F) 202-822-0908

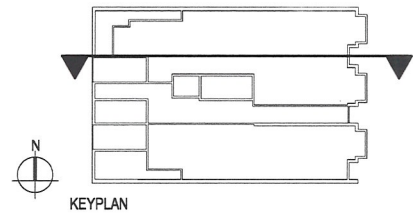
PROPOSED ROOF FLOOR PLAN

A-25

08/17/2016



1 PROPOSED BUILDING SECTION  
SCALE: 1/16" = 1'



1612-1616 7TH ST. N.W.

1612-1614 7th St. N.W.  
Washington D.C.  
Square: 420 Lot No: 38 Zone: C-2-A



PGN Architects, PLLC  
210 7th Street SE - Suite 201  
Washington, DC 20003  
(P) 202-822-5995 (F) 202-822-0908

PROPOSED BUILDING SECTION A-34

08/17/2016

W:\13\_003\_1612\_1616\_7th St N.W.\proposed building section - with parking.dwg  
 08/17/2016 10:41:14 AM  
 PLOT: 1612-1616 7TH ST. N.W.